

STAT-PAK FOR WINDOWS USER'S GUIDE WAGNER L622



WAGNER[®]
M E T E R S
Unleash Your Expertise

Copyright Notice

Stat-Pak For Windows User's Guide

© Copyright 2019 Wagner Meters. All Rights Reserved Worldwide. No part of this publication may be reproduced, transmitted, transcribed, stored in a retrieval system, or translated into any other language in any form by any means without the express written permission of Wagner Meters.

Software License Agreement

PLEASE READ THE FOLLOWING TERMS AND CONDITIONS CAREFULLY BEFORE USING THE ACCOMPANYING SOFTWARE. This software license agreement (this "agreement") is a legally binding agreement between you and Wagner Meters. By accepting this license and proceeding to download the software accompanying this agreement and related documentation, whether on disk, in read-only memory or on any other media, (collectively, the "software"), you are agreeing to be bound by the terms and conditions of this agreement. If you do not agree to the terms and conditions of this agreement, do not install or use the software, and promptly return the unused software to the person from whom you obtained it.

1. License. Subject to the terms of this agreement, Wagner Meters grants to you a nonexclusive license to use the software on a single computer. You may make (a) one copy of the software (excluding documentation) in machine-readable form for your exclusive use on a computer and (b) one copy of the software (excluding documentation) in machine-readable form for backup purposes only; provided that each such copy is a true and complete copy, that you reproduce on each such copy the copyright notice and any other proprietary legends on the original copy of the Software, and that no more than one copy of the Software is used at any one time.
2. Restrictions. You acknowledge that the software, and its structure, organization and source code, contain copyrighted material, trade secrets and other proprietary material owned by Wagner Meters. Accordingly, you may not except to the extent permitted by any applicable law (a) de-compile, reverse engineer, disassemble or otherwise reduce the software to a human-perceivable form, (b) modify, adapt, alter, translate or create derivative works from the software, (c) merge the software with other software, (d) sublicense, network, rent, lease, loan, or distribute the software in whole or in part, or (e) otherwise use or copy the software except as expressly permitted under Section 1. In addition, you may not electronically transmit the software from one computer to another or over a network. All rights in and to the software not expressly granted to you under this agreement are reserved to Wagner Meters.

No warranty or representation is given that the functions contained in the software will meet your requirements, or that the operation of the software will be uninterrupted or error-free, or that defects in the software will be corrected. Furthermore, no warranty or representation is given regarding the use or the results of the use of the software or related documentation. No oral or written information or advice given by any person or entity shall create a warranty or representation or in any way increase the scope of this warranty.

Wagner Meters is not required to provide any maintenance or support services with respect to the software under this agreement.

Limitation of Liability

Under no circumstances, including negligence, shall Wagner Meters be liable for any consequential, incidental, indirect, exemplary, special or punitive damages, including without limitation any loss of data, or loss of profit, savings, business or goodwill or other similar loss resulting from the use or inability to use the software, even if Wagner Meters has been advised or the possibility of such damages, or for any claim by any third party.

In no event shall the total liability to you for all damages, losses, and causes of action (whether in contract, tort (including negligence) or otherwise) exceed the amount paid by you for the software.

Technical Support

Should you require support, please consult your printed documentation to resolve your problem. If you are still having trouble, you may contact a Wagner Technical Service representative during normal business hours—7:30 a.m. to 4:00 p.m. Pacific Standard Time, Monday through Friday.

Voice: (541) 582-0541
Fax: (541) 582-4138
E-Mail: support@wagnermeters.com

Mail: Technical Services Department
Wagner Meters
326 Pine Grove Road
Rogue River, OR 97537

TABLE OF CONTENTS

TABLE OF CONTENTS.....	5
AN INTRODUCTION TO STAT-PAK FOR WINDOWS	6
About This Manual	6
2 GETTING STARTED.....	7
Loading Stat-Pak	7
L622 to PC Connection	8
Running Stat-Pak	8
Quitting Stat-Pak	9
Installation Requirements	9
Demonstrator Database	10
Special Editing Keystrokes	10
3 DOWNLOADING DATA TO THE METER.....	12
Download Meter Number to the L622	12
Download Company Name to the L622	13
Download Date and Time to the L622	13
Download Species to the L622	13
4 UPLOADING DATA FROM THE METER	14
Upload Measurement Data into Stat-Pak	14
Upload Species Data into Stat-Pak	16
5 WORKING WITH THE DATA	16
Custom Species Folders	17
Editing Species Data	17
Data Sets	18
Creating Summary Reports	19
Adding Groups to a Summary	19
Viewing Reports	19

Printing Reports	20
6 SYSTEM PROPERTIES	21
Dates Tab	21
Settings Tab	21
Communications Port	22
Language Tab	22
7 DATABASE FUNCTIONS	22
Open a New Database	22
Compacting the Database	23
Import/Export Functions	23
APPENDIX A	26
Species List	26
APPENDIX B	29
Glossary	29
L622 Stat-Pak For Windows Software Upgrade Procedure	30
APPENDIX C	32
Troubleshooting guide	32

AN INTRODUCTION TO STAT-PAK FOR WINDOWS



'Stat-Pak'

The most powerful handmeter moisture analysis
program in the wood products industry

Warning: This computer program is protected by copyright law and international treaties. Unauthorized reproduction or distribution of this program or any portion of it may result in severe civil and criminal penalties and will be prosecuted to the maximum extent possible under the law.

Welcome to Stat-Pak for Windows! This is the most powerful hand-meter moisture analysis program in the wood products industry. This program allows you to manage all aspects of moisture quality control. You can store, recall, and analyze the data collected from the L622.

The program allows you to:

- Customize your L622 reports with company name and meter number.
- Archive L622 group data to a storage device for later retrieval.
- Recall archived reports for viewing and printing.
- Generate custom Summary Reports.
- Export data to popular spreadsheet programs for more complex analysis.
- Custom tailor the L622 species list for your needs.

ABOUT THIS MANUAL

This *Stat-Pak User's Guide* is designed to pilot you through the basic features of Stat-Pak, and to introduce you to the advance features.

1 *An Introduction to Stat-Pak* gives you an overview of the contents of the manual and what Stat-Pak does.

2 *Getting Started* shows you step-by-step how to install, run, and quit the Stat-Pak software.

3 *Downloading Data to the Meter* describes the functionality available to custom configure your L622 hand-meter.

4 *Uploading Data from the Meter* describes how to get your L622 hand-meter data into the Stat-Pak database.

5 *Working with the Data* tells you how to move and edit data within the Stat-Pak database to generate reports.

6 *System Properties* tells you how to set the Stat-Pak program settings for easiest viewing, language, and communications port options.

7 *Database Functions* describes how to import, export, or repair the Stat-Pak data.

8 *Language Translator* allows you to internationalize the Stat-Pak language for your application.

Appendix A Species List gives you the Specific Gravity values for the most commonly used species of wood that are used in your L622 hand-meter. You can also go to www.WagnerMeters.com/Specific-Gravity for a lengthy list of species and their Specific Gravity value.

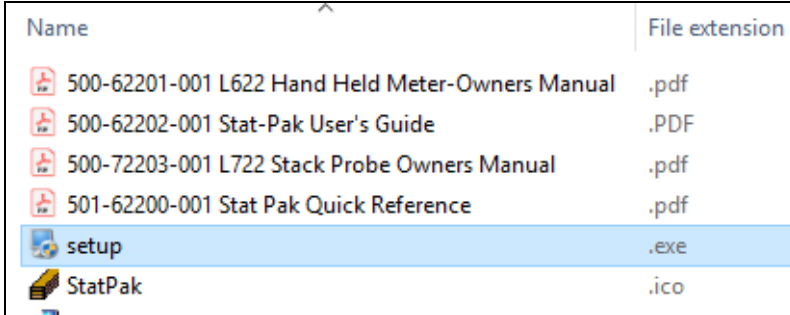
2 GETTING STARTED

The Stat-Pak software will operate on any PC compatible with the installation requirements in this section. An available USB port (COM 1, COM 2, etc.) must be available to communicate with the L622.

Note: If upgrading Stat-Pak for Windows with a newer version of software please refer to **L622 Stat-Pak for Windows Software Upgrade Procedure** located in **Appendix B**.

LOADING STAT-PAK

To install Stat-Pak on your hard drive, simply install the Stat-Pak program from the Thumb Drive. Locate the file named Setup.exe on the Thumb Drive and double click on it to initiate the installer program.



Name	File extension
500-62201-001 L622 Hand Held Meter-Owners Manual	.pdf
500-62202-001 Stat-Pak User's Guide	.PDF
500-72203-001 L722 Stack Probe Owners Manual	.pdf
501-62200-001 Stat Pak Quick Reference	.pdf
setup	.exe
StatPak	.ico

The installer wizard will lead you through the installation process. Click the Next and Finish buttons to complete the process.

By default, the application is installed to "C:\Program Files (x86)\Stat-Pak" or Program Files.

The last page of the installation wizard may report that your PC will be re-started to complete the installation process. In this case you will not be able to run the software until this is done.

L622 TO PC CONNECTION

Various function and manager windows require communicating with the L622 hand-meter to retrieve information.

To allow the L622 meter to communicate with the PC computer, the following equipment is provided:

- L622 hand-meter
- USB cable
- Thumb Drive with Stat-Pak for Windows software, manuals, and drivers for USB cable (if not recognized on your PC).

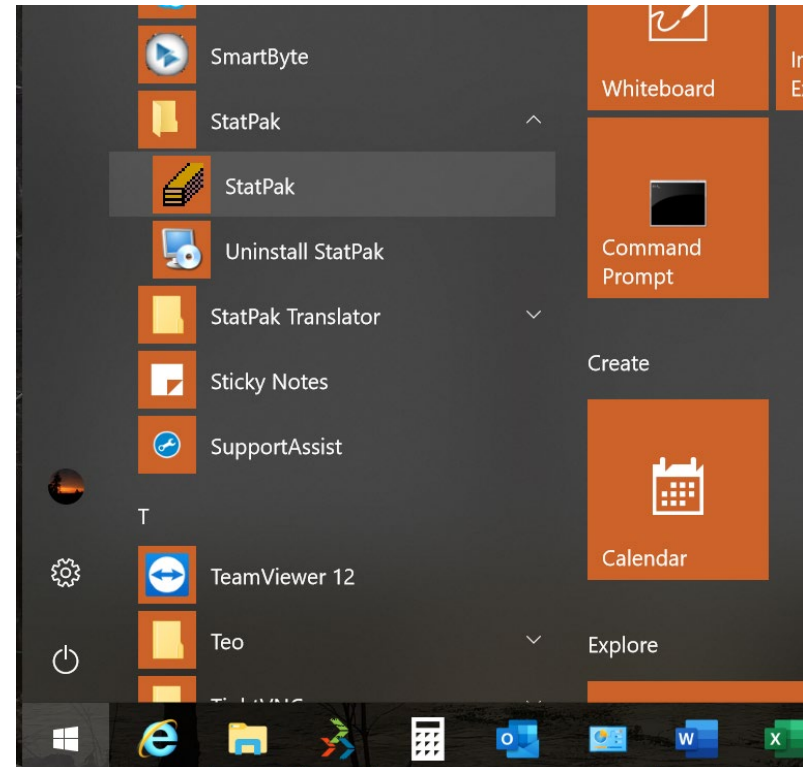
Follow these steps to establish communications using a PC USB port.

- Plug one end of the USB cable into the COMM port of the L622.
- Plug the other end into the PC.
- Determine the COM port number that the cable is plugged into, this port number will have to be entered in the Settings of Stat-Pak. The Thumb Drive contains the driver for the USB cable if your PC does not recognize it.
- Stat-Pak is configured to communicate through COM 1 by default. For an alternate COM port, please refer to the System Properties section now on how to configure Stat-Pak to recognize an alternate COM port.

Turn ON the L622 meter by pressing the STORE button.

RUNNING STAT-PAK

With the meter turned ON, open the Stat-Pak software (Windows 10 below). For older version of Windows, select Program Files (x86) on C:Drive - StatPak – StatPak.



L622 group data and species settings will be automatically uploaded into the lower panels of the Stat-Pak program upon program launch, see **Fig 1**, which may take one to several minutes if many readings are stored in the meter. If you need to re-upload meter data, you can select View-Refresh from the pull-down menu or use the F5 key.

QUITTING STAT-PAK

WARNING! Never shut down the computer without performing the following procedure or damage to Stat-Pak may result. Following, is the procedure for quitting Stat-Pak.

From the "File" menu, select "Exit", or click on the "X" icon shown at the top right corner of the window.

INSTALLATION REQUIREMENTS

The MINIMUM supported PC configurations are as follows:

Windows 2000
Windows XP
Windows 7

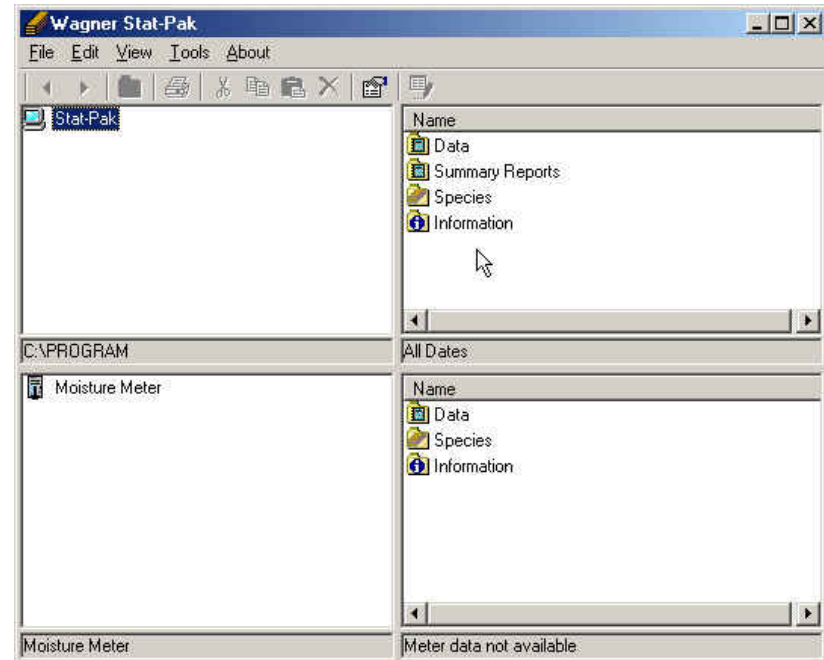


Fig. 1

NOTE: When the program is started it attempts to upload data from a meter. If the meter has switched OFF or disconnected a dialog will appear to this effect. There are two options:

- Switch ON the meter, wait for it to initialize and then press OK. The program will upload the data and continue.
- Press Cancel. The program will continue loading without uploading data. In this case the meter data is not immediately available but can be accessed later if required. Required step if Comm port number does not match in Stat-Pak with the port the USB cable is connected to.

When the program is run for the first time (and until a new database is created) it should automatically load the default database.

You may re-size the window and panels to suit your screen. Generally, the right hand (list view) panels should be as wide as possible to maximize the number of fields visible without scrolling.

DEMONSTRATOR DATABASE

If the top panels are empty, you must manually open the 'L6xx' database. The database demonstrator file is called 'L6xx.wsp' and is normally located in the application folder (e.g. C:\Program Files (x86)\StatPak). Click on the file menu and select 'Open'. Locate the file 'L6xx.wsp' and open it. The demonstrator database serves the following purposes:

A demonstration database could be supplied containing sample data.

The user can create a dummy database for training and experimentation purposes.

If data is being gathered in unconnected sites, each site can create a local database with a meaningful file name. These database files can be collected and combined centrally if required.

In a networked environment the main database can be placed in a shared folder on the server. Any user can open the shared file and work with it.

This functionality is invisible to the casual user. The currently selected database will always load on start-up unless a problem occurs (e.g. someone has moved the file, or the network is down).

SPECIAL EDITING KEYSTROKES

There are several ways to invoke the various editing functions. It is possible to select the required option from the 'File' menu, by right clicking or dragging the mouse or, in some cases, by pressing buttons on the toolbar.

Editing is always performed in the right-hand panels, right-click in the white area.

When in edit mode (data grid) it is necessary to move the cursor focus away from the current cell (or to press ENTER) to register the last edit.

NOTE: When editing data using Microsoft DataGrid, it is necessary to press the enter key after changing data, otherwise the data will not be saved after exiting the edit mode.

Right-clicking on a tree node in the left panels permits actions on the displayed list items in the right panels.

Right-clicking on the white background of the list view panel will also permit actions on the displayed list items.

Right-clicking on a list view item will permit actions (e.g. deletion) on the selected item only.

List views (right panel) may be sorted by column by clicking the required column header to select it and clicking again to sort. Subsequent clicks reverse the sort order.

The following actions are only available when valid items are selected (or in some cases have the focus):

Add New Item:

Menu – File – AddNew
Mouse – RightClick – AddNew

Delete Item:

Menu – File – Delete
Mouse – RightClick – Delete
ToolBar – Delete button “X”
KeyBoard – Delete Key

Edit Item(s):

Menu – File – Edit
Mouse – RightClick – Edit
ToolBar – Edit button

Copy Item(s):

Menu – Edit – Copy
ToolBar – Copy button
KeyBoard – Ctrl - C

Paste Item(s):

Menu – Edit – Paste
ToolBar – Paste button
KeyBoard – Ctrl - V

Select All

Menu – Edit – Select All
KeyBoard – Ctrl – A

Select Multiple

KeyBoard – Ctrl – LeftClick

Invert Selection

Menu – Edit – Invert Selection

3 DOWNLOADING DATA TO THE METER

NOTE: The L622 hand-meter has an auto shut off function that will turn meter power OFF after 60 seconds of inactivity. This may cause a communications error when interfacing with Stat-Pak. The solution is to turn ON the L622 power again, and retry the communication with Stat-Pak.

The Stat-Pak program has a 4-panel layout as shown in **Figure 1** previously. The upper left panel is the Stat-Pak Database Directory Tree. Double-Clicking on the folders will reveal the associated Stat-Pak files in the upper right panel.

The lower left panel is the Moisture Meter Directory Tree. Clicking on the folders will reveal the associated L622 meter files in the lower right panel.

Data can be moved between the Stat-Pak database and the L622 by dragging and dropping files between the upper and lower panels.

DOWNLOAD METER NUMBER TO THE L622

First assign the meter number for the Stat-Pak records. This number can be arbitrarily assigned by the user to differentiate data from different meters.

Open the 'Stat-Pak' computer in the top left window panel (top panel).

Open the 'Meters' folder under the 'Information' Folder.

Right-click the Meters folder (left hand panel) or right-click the background of the right-hand panel.

NOTE: The cursor must be in the white background area to select functions that relate to all files within the current window panel or have the cursor over the file name to select functions that relate to the file itself.

- Select 'Add New'.
- Right-click again and select 'Edit'.
- Enter the meter number plus any required comments, then press "Enter".
- Right-click again and de-select 'Edit' mode.

Then drag the meter number into the meter by doing the following:

- Open the Moisture Meter in the lower left window panel.
- Open the 'Information' Folder.
- Drag the Meters icon from the Stat-Pak view into the Moisture Meter Information folder.
- If the download is successful, the meter number appears in the Moisture Meter view.

Note: This operation can also be performed by copying and pasting.

DOWNLOAD COMPANY NAME TO THE L622

If necessary, edit the company name stored in Stat-Pak.

- Open the 'Information' folder (top panel)
- Right-click the Information folder (left-hand panel) or right-click the background of the right-hand panel.
- Select 'Edit'.
- Edit the company name and press "Enter", using a maximum of 30 characters.
- Right-click again and de-select 'Edit' mode.
- Then drag the company name into the meter.
- Open the Moisture Meter 'Information' Folder (lower panel)
- Drag the company name from the Stat-Pak view into the Moisture Meter view.
- If the download is successful company name appears in the Moisture Meter view.

Note: This operation can also be performed by copying and pasting.

DOWNLOAD DATE AND TIME TO THE L622

The computer date and time is shown in the Stat-Pak view. If it is incorrect adjust the time using the PC Windows Control Panel.

- Open the 'Information' folder (top panel)

Then drag the date and time into the Moisture Meter Information folder.

- Open the Moisture Meter 'Information' Folder (lower panel)
- Drag the date and time from the Stat-Pak view into the Moisture Meter view.
- If the download is successful, the correct date and time appears in the Moisture Meter view.

Note: This operation can also be performed by copying and pasting.

DOWNLOAD SPECIES TO THE L622

The meter can store up to 32 species.

- Open the Moisture Meter 'Species' Folder (lower panel)
- Delete any unwanted species before loading new ones, must be less than 32 total species/products.
- The original list can be restored by dragging the Stat-Pak Species Default list into the Moisture Meter Species folder or doing a Factory Reset on the Meter, see the meter *Owner's Manual* for instructions.

Then select the species from the Stat-Pak records.

- Open the 'Species' folder (top panel).
- Open the sub folder containing the required species.
- Select the species to be downloaded.

Then drag the species into the meter.

- Drag the selected species from the Stat-Pak view into the Moisture Meter view white background area.
- If the download is successful, the species will appear in the Moisture Meter view.

Note: This operation can also be performed by copying and pasting.

4 UPLOADING DATA FROM THE METER

L622 group data and species settings will be automatically uploaded to the Stat-Pak programs Moisture Meter view (lower panels) upon program launch. If you need to re-upload meter data, you can select View-Refresh from the pull-down menu or use the F5 key.

NOTE: The L622 hand-meter has an auto shut off function that will turn meter power OFF after 60 seconds of inactivity. This may cause a communications error when interfacing with Stat-Pak. The solution is to turn ON the L622 power again, and retry the communication with Stat-Pak.

NOTE: If the program fails to communicate with the meter and displays an error message “unable to initialize communications port 1”, there may be an improperly terminated version of the program running. Perform a Ctrl-Alt-Delete to bring up the Window Task Manager and select End Task for the Stat-Pak program.

The Stat-Pak program has a 4-panel layout as shown in **Figure 1** previously. The upper left panel is the Stat-Pak Database Directory Tree. Double-Clicking on the folders will reveal the associated Stat-Pak files in the upper left panel.

The lower left panel is the Moisture Meter Directory Tree. Clicking on the folders will reveal the associated L622 files in the lower right panel.

Data can be moved between the Stat-Pak database to the L622 by dragging and dropping files between the upper and lower panels.

UPLOAD MEASUREMENT DATA INTO STAT-PAK

Create a new ‘Data Set’ folder to contain the meter data.

- Open the Stat-Pak ‘Data’ folder (top panel).
- Right-click the Data folder (left-hand panel) or right-click the background of the right-hand panel.

NOTE: The cursor must be in the white background area to select functions that relate to all files within the current window panel or have the cursor over the file name to select functions that relate to the file itself.

- Select ‘Add New’.
- Right-click again and select ‘Edit’.
- Enter a description for the data set and press “Enter”.

Note: The program only supports one level of data set folders. You can't create a new folder within the data set. Choose names for the data set folders that are most descriptive (i.e. Days-Fir, Nights-Cedar, Kiln#1).

- In the Stat-Pak Data view, add the kiln and supplier reference information as required. These are optional programmable data entry fields and are not required. The supplier reference data field allows entry of up to 9 alphanumeric character values and can be used to track your lumber supplier shipments if you are using the meter to measure the moisture content of incoming lumber.
- The meter number is not editable it is the number of the attached meter.
- Right-click again and de-select 'Edit' mode.
- Open the newly created folder.

Now, drag the group data from the meter into the Stat-Pak folder by doing the following:

- Open the Moisture Meter 'Data' folder (lower panel)
- Select the groups to be uploaded.
- Drag the groups from the Moisture Meter view into the desired Stat-Pak Data folder.
- If the upload is successful, the groups appear in the folder.

Note: This operation can also be performed by copying and pasting.

Edit the data by selecting the right mouse key "Edit" function to add Location (unit) and Reference information.

Both data field entries are optional and not a required field.

The Location data field allows entry up to 5-digit numeric values. The Location field can be used to map your kilns with a Wagner location coordinate (a ZZ, Y, X, axis 3-D format) that is currently being used with the Info-Pak Plus/Katview software for inline system report generation as shown in **Figure 2**. This allows your kiln drying personnel to know the exact pack location for providing valuable information necessary to adjust the kilns for optimum drying performance.

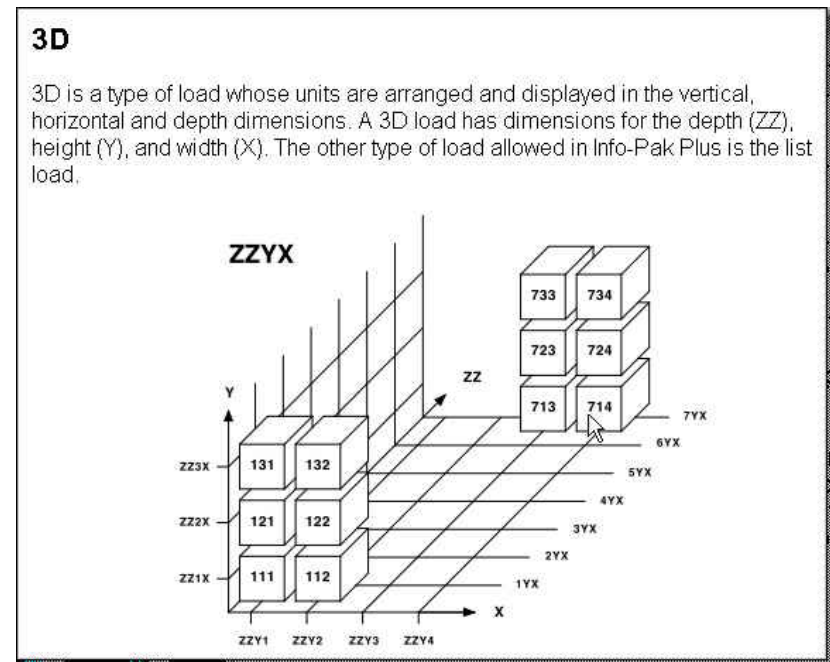


Fig. 2

The unit reference data field allows entry of up to 10 alphanumeric character values. This is a customer programmable data entry field that can be customized to provide additional information for kiln drying or quality control personnel.

- Right-click the open Stat-Pak folder (left-hand panel) or right-click the background of the right-hand panel and select 'Edit'.
- Enter the Location information and press "Enter".
- Enter any Reference information.
- Right-click again and de-select 'Edit' mode.

UPLOAD SPECIES DATA INTO STAT-PAK

Create a new 'Custom' folder to contain the Species data.

- Open the Stat-Pak 'Species' folder (top panel).
- Right-click the Species folder (left-hand panel) or right-click the background of the right-hand panel.
- Select 'Add New'.
- Right-click again and select 'Edit'.
- Enter a description for the custom species folder and press "Enter".
- Right-click again and de-select 'Edit' mode.
- Open the newly created folder.

Or add to an existing 'Custom' folder:

- Open the Stat-Pak 'Species' folder (top panel).

- Open the required custom folder

Then drag the species data from the meter into the Stat-Pak folder by doing the following:

- Open the Moisture Meter 'Species' folder (lower panel)
- Select the species to be uploaded. Multiple groups can be moved simultaneously by depressing the control key and left mouse clicking on the required groups.
- Drag the species from the Moisture Meter view into the Stat-Pak folder.
- If the upload is successful, the species will appear in the folder.

Note: This operation can also be performed by copying and pasting.

5 WORKING WITH THE DATA

The Stat-Pak program has a 4-panel layout as shown in the **Figure 3**. The upper left panel is the Stat-Pak Database Directory Tree. Double-Clicking on the folders will reveal the associated Stat-Pak files in the upper left panel.

The lower left panel is the Moisture Meter Directory Tree. Clicking on the folders will reveal the associated L622 files in the lower right panel.

Data can be moved between the Stat-Pak database to the L622 by dragging and dropping files between the upper and lower panels.

CUSTOM SPECIES FOLDERS

New 'Custom' folders may be added (and named) as required.

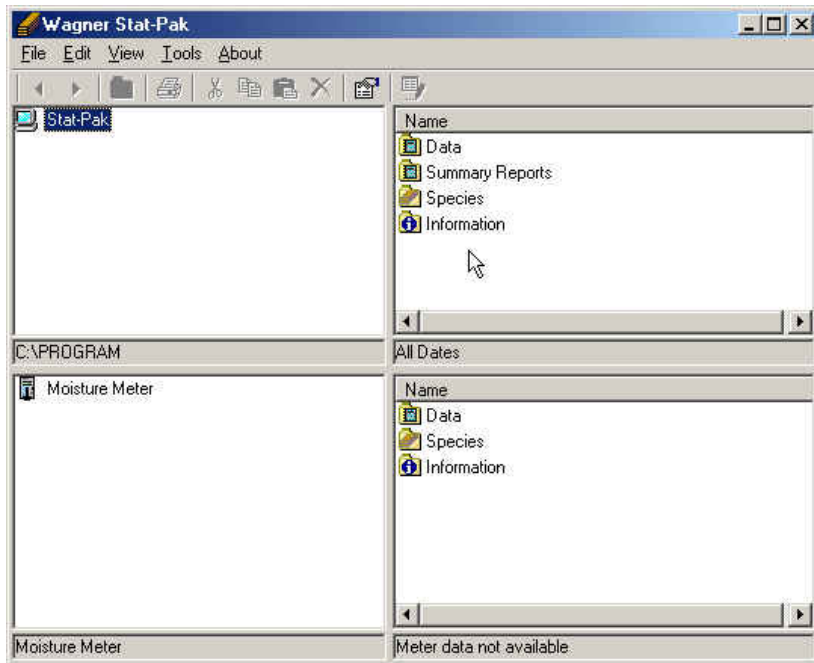


Fig. 3

- Open the Stat-Pak 'Species' folder (top panel).
- Right-click the Species folder (left-hand panel) or right-click the background of the right-hand panel.
- Select 'Add New'.
- Right-click again and select 'Edit'.
- Enter a description for the custom species folder and press "Enter".
- Right-click again and de-select 'Edit' mode.

The contents of Custom folders are editable.
The contents of Standard species folders are NOT editable.

Note: The program only supports one level of data set folders. You can't create a new folder within the data set. Choose names for the data set folders that are most descriptive (i.e. Days-Fir, Nights-Cedar, Kiln#1).

Species data may be copied (or dragged) between folders as required.

NOTE: Data dragged into a folder will appear at the end of the file list until the information is resorted by re-opening the window.

EDITING SPECIES DATA

To add a new Species data folder

- Open the Stat-Pak 'Species' folder (top panel).
- Open the required custom folder
- Right-click the folder (left-hand panel) or right-click the background of the right-hand panel.

NOTE: The cursor must be in the white background area to select functions that relate to all files within the current window panel or have the cursor over the file name to select functions that relate to the file itself.

- Select 'Add New'.

To edit species data:

- Open the Stat-Pak 'Species' folder (top panel).
- Open the required Custom folder
- Right-click the folder (left-hand panel) or right-click the background of the right-hand panel and select 'Edit'.
- Edit the description or specific gravity and press "Enter".
- Right-click again and de-select 'Edit' mode.

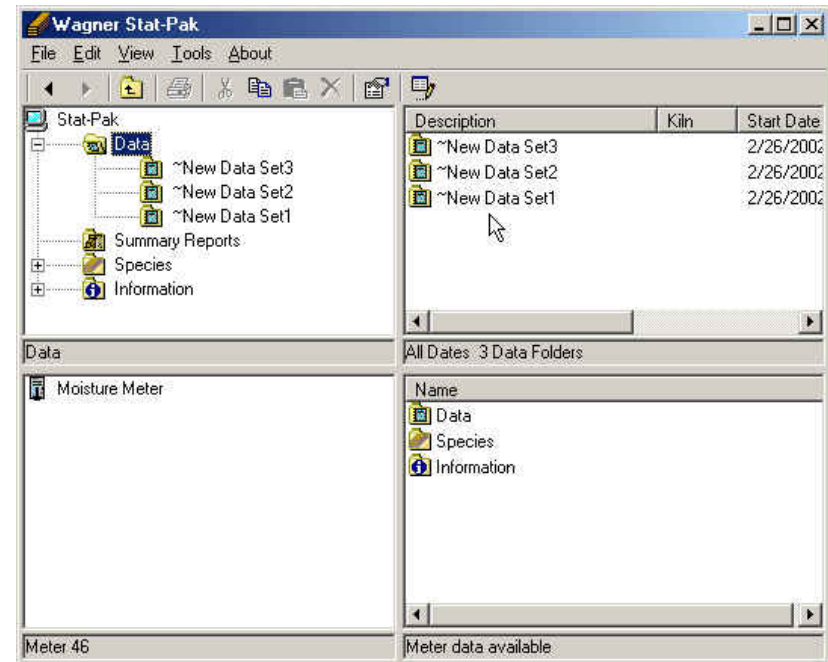
Note: The Stat-Pak program does not allow you to delete species data stored in the meter. This operation must be performed via the L622 hand-meter internal menu by selecting the "Clear" function as described in the L622 manual.

DATA SETS

Creating Data Sets is covered in the section "Upload Measurement Data into Stat-Pak"

Selecting a 'Data Set' folder displays all groups contained within.

Selecting a group displays the individual group readings.



Note: Sorting data by kiln, supplier or meter will also perform a secondary sort by date. Clicking on the window panel header can perform the sort.

Note: It is also possible to set a date range to limit the displayed data –see section 6 *System Properties*.

CREATING SUMMARY REPORTS

Creating a new 'Summary Report' folder to contain custom collections of group data sets.

- Open the Stat-Pak 'Summary Report' folder (top panel).
- Right-click the Summary Report folder (left-hand panel) or right-click the background of the right-hand panel.
- Select 'Add New'.
- Right-click again and select 'Edit'.
- Enter a description for the summary and modify the date if required, and press "Enter".
- Right-click again and de-select 'Edit' mode.
- Open the newly created folder.

ADDING GROUPS TO A SUMMARY

- Open the Stat-Pak 'Data' folder (top panel).
- Open the required 'Data Set' folder.
- Copy the required groups
- Return to the Summary Report
- Paste the groups into the summary**
- If the paste is successful, the groups appear in the folder.

Repeat from other data sets as required.

** This operation can also be performed by dragging group data from a list view (right panel) and dropping onto a report summary node (left panel).

Note: It is possible to set a date range to limit the displayed data -see the System Properties section.

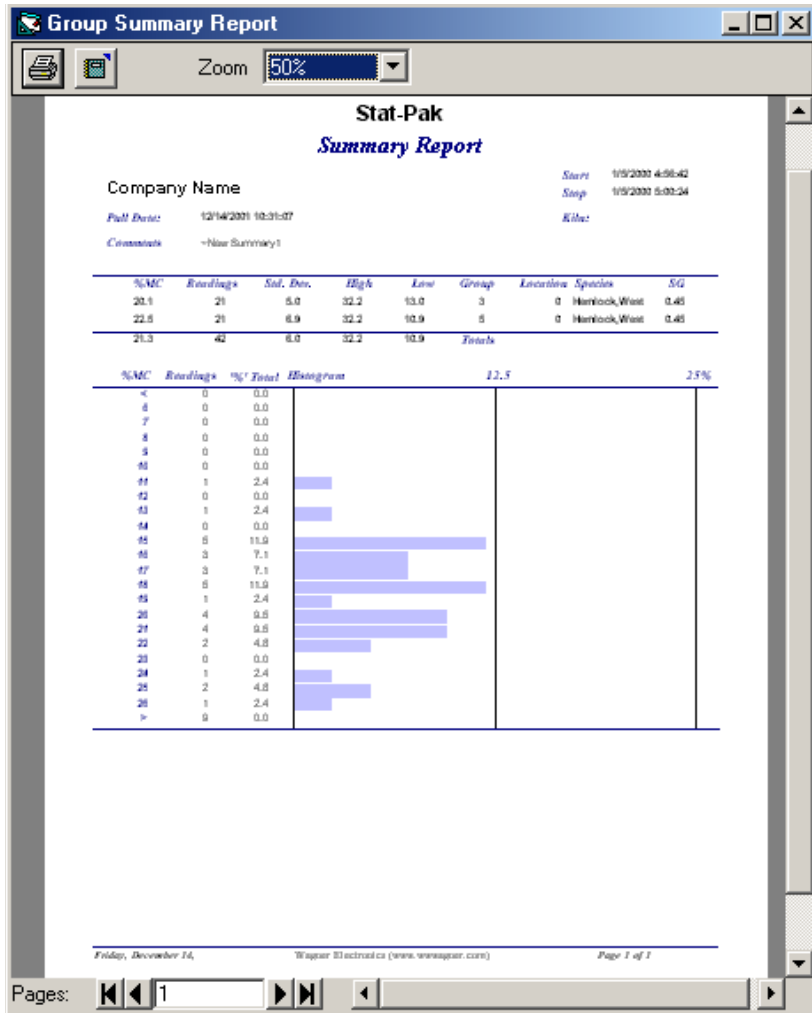
To view or print a Group Summary Report right click the 'data set' folder within the summary folder and select 'View/Print'.

VIEWING REPORTS

To view or print a Group Report right click the group and select 'View/Print'.

To view or print a Readings Report right click the group and select 'View/Print Readings'.

To view or print a Group Summary Report right click the 'data set' folder within the summary folder and select 'View/Print'.



PRINTING REPORTS

Printing can be initiated by selecting 'View/Print' from the file menu, clicking the 'Print' button, by right-clicking the mouse and selecting View/Print' from the pop-up menu or by pressing the 'Print' button on the toolbar.

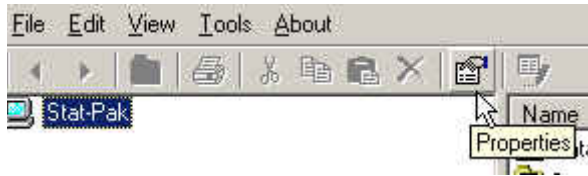
A print window is always presented first, giving the option to print if required.

The type of report displayed depends on the node or item currently selected.

The report may either be printed or exported to an HTML, or text file.

In addition to printing from the Stat-Pak, Group Reports and Readings Reports may also be viewed or printed directly from the meter by right-clicking a group in the Moisture Meter view (lower panel).

6 SYSTEM PROPERTIES



There are two properties views dependent upon the current selection. Clicking the database icon on the tool bar shown or in any blank area inside a left panel and selecting 'Properties' will invoke the 'File Information' properties view. Clicking any other area will invoke the main system properties view.

DATES TAB

Setting Date Ranges

Allows (optional) selection of start and end dates for display and printing.

Any dates set up here will be used for all subsequent date related database queries. The sort is based on the data folder start date. This field is set by the first data reading value contained within the folder.

To define a start date, check the 'From' box and select a date.

To define an end date, check the 'To' box and select a date.

Clicking 'OK' will limit displayed information in the upper right-side panel in the Stat-Pak "Data" and "Summary Reports" folders to the dates set.

To use these dates as default values in future, simply check the 'Set as Default' box and click 'OK'

Editing of Data Set 'Start Date' is not possible.

The Data Set creation date is stored internally but is not used or shown to the user

The Summary Reports include an additional calculated 'Start Date' field determined by the earliest group start date referenced within it.

Editing of Summary Report 'Start Date' is not allowed.

Summary Reports are now filtered by the calculated start date.

SETTINGS TAB

Field Widths: If the 'Use System Defaults' option is unchecked then any adjustments made to field widths will be retained between sessions.

Meter No.	Description
-----------	-------------

Width adjustments can be made by left mouse clicking on the separator bar between the fields and dragging the bar in the desired direction. For width adjustments to be saved, they must be made in non-edit mode. The change is recorded when the list view is changed or refreshed.

COMMUNICATIONS PORT

The combo box lists available ports detected by the L622Interface DLL. Selecting a number sets the comm. port to be used.

If the COM port number is not listed, as may be the case if using the USB to serial converter, the port number can be typed directly into the edit field. Be aware though, that the COM port may not be listed, because it may be in use by another program on your computer.

LANGUAGE TAB

The language combo box lists available languages found in the resource database. If an alternative language is selected the program must be closed and re-started for the change to take effect.

7 DATABASE FUNCTIONS

OPEN A NEW DATABASE

From the 'Tools' menu, select 'Database Utilities' then 'Create New Database'

Enter the required name and path for the new database and click 'Save'.

If the database is to be shared across a network, then place the database file on an appropriate shared drive.

The most recently used database files are listed under the 'File' menu, this makes it a simple matter to switch between two or three different databases.

COMPACTING THE DATABASE

From the 'Tools' menu, select 'Database Utilities' then 'Compact Database'

If you delete entries, your database can become fragmented and use disk space inefficiently. Compacting the database removes dead space and rearranges how the database file is stored on disk.

IMPORT/EXPORT FUNCTIONS

Export Species Information to Stat-Pak Species File (*.spc)

- Right-click the species folder to be exported.
- Select the 'Export – Selected Data to Backup File' menu option.
- The 'Open File' dialog is invoked.
- The offered filename is the species folder name, accept or edit it and click OK.
- The selected species will be copied to the file.

Note: Default folders are saved with a “_” prefix appended to the filename. If the prefix is removed the records will be imported as custom data (i.e. the folder will lose its default status).

Import Species Information from Stat-Pak Species File (*.spc)

- Select the 'File – Import - Species' menu option.
- The 'Open File' dialog is invoked.
- Select a species file (*.spc) and open it.
- The species data will be imported to a folder where the folder name is the filename. If the folder already exists, it will be overwritten, otherwise it will be created.

- If the filename is the same as one of the defaults (non-custom) folders this data will also be overwritten. This is the only means of modifying default data.

Note: To import species into a (new or existing) default folder simply ensure that the filename begins with an underscore character.

Export Selected Data to Stat-Pak Backup File (*.spb)

- Right-click the data set to be exported.
- Select the 'Export – Selected Data Set to Backup File' menu option.
- The 'Open File' dialog is invoked.
- The offered filename is the data set description, accept or edit it and click OK.
- The selected data set will be copied to the file.

Note: Multiple data set selections are not allowed.

Export Data by Date Range to Stat-Pak Backup File (*.spb)

- Set the date range from the 'Properties' panel
- Right-click the \Data folder.
- Select the 'Export – Selected Data to Backup File' menu option.
- The 'Open File' dialog is invoked.
- The offered filename is the date range in the format mmddyy_mmddyy.spb, accept or edit it and click OK.
- The selected data set will be copied to the file.

Import Data from Stat-Pak Backup File (*.spb)

- Select the 'File – Import – Data' menu option.
- The 'Open File' dialog is invoked.
- Select the required data backup file (*.spb) and open it.
- The data set(s) will be imported.

If the Description, Start Date and Meter Number match an existing data set the data will be overwritten, otherwise a new entry will be added.

If data is added but the description matches an existing entry a sequential number will be appended.

Export Selected Report Summary to Stat-Pak Report Backup File (*.spr)

- Right-click the report summary to be exported.
- Select the 'Export – Selected Data to Backup File' menu option.

- The 'Open File' dialog is invoked.
- The offered filename is the summary description, accept or edit it and click OK.
- The selected data set will be copied to the file.

Note: Multiple report summary selections are not allowed.

Export Report Summaries by Date Range to Stat-Pak Report Backup File (*.spr)

- Set the date range from the 'Properties' panel
- Right-click the \Summary Reports folder.
- Select the 'Export – Selected Data to Backup File' menu option.
- The 'Open File' dialog is invoked.
- The offered filename is the date range in the format mmddyy_mmddyy.spr, accept or edit it and click OK.
- The selected data set will be copied to the file.

Import Report Summaries from Stat-Pak Report Backup File (*.spr)

- Select the 'File – Import – Summaries' menu option.
- The 'Open File' dialog is invoked.
- Select the required report backup file (*.spr) and open it.
- The data set(s) will be imported.
- If the Description, Start Date and Meter Number matches an existing data set the data will be overwritten, otherwise a new entry will be added.

- If data is added but the description matches an existing entry a sequential number will be appended.

If the Description, Kiln and Pull Date match an existing report summary the report will be overwritten, otherwise a new entry will be added.

If a report is added but the description matches an existing entry a sequential number will be appended.

Report backup files include the related data set and group information these data are imported using the same criteria as the 'Import Data' function.

Export Readings Data in Tab Delimited Text format (*.txt)

- Right-click the data set or report summary to be exported.
- Select the 'Export – Readings Report (Text Format)' menu option.
- The 'Open File' dialog is invoked.
- The offered filename is the report or data set description followed by “_readings”, accept or edit it and click OK.
- The selected data set will be copied to the file.

Note: Multiple selections are not allowed.

Note: The 'readings' suffix is obtained from the resource file and is therefore translatable.

Export Group Data in Tab Delimited Text format (*.txt)

- Right-click the data set or report summary to be exported.
- Select the 'Export – Group Report (Text Format)' menu option.
- The 'Open File' dialog is invoked.
- The offered filename is the report or data set description followed by “_group”, accept or edit it and click OK.
- The selected data set will be copied to the file.

Note: Multiple selections are not allowed.

Note: The 'group' suffix is obtained from the resource file and is therefore translatable.

Export Charge Data (*.chg)

- Right-click the report summary to be exported.
- Select the 'Export – Charge Data' menu option.
- The 'Open File' dialog is invoked.
- The offered filename is the report or data set description, accept or edit it and click OK.
- The selected data set will be copied to the file.

APPENDIX A

SPECIES LIST

These are the contents of the factory set species folders.

Default .SPC

Spec. Gravity:	Default Species:
0.41	Alder, Red
0.47	Cedar, Eastern Red Cedar
0.32	Cedar, Western Red Cedar
0.50	Cherry, Black
0.48	Douglas Fir
0.35	Fir, Balsam
0.38	Fir, California Red
0.32	Fir, Subalpine
0.39	Fir, White
0.40	Hemlock, Eastern
0.45	Hemlock, Western
0.60	Hickory (Pecan), Nutmeg
0.66	Hickory, Pecan
0.72	Hickory (True), Mockernut
0.52	Larch, Western
0.63	Maple, Sugar
0.63	Oak (Red), Northern Red
0.59	Oak (Red), Southern Red
0.68	Oak, White
0.35	Pine, Eastern White
0.43	Pine, Jack
0.51	Pine, Loblolly
0.41	Pine, Lodgepole
0.59	Pine, Longleaf
0.40	Pine, Ponderosa
0.51	Pine, Shortleaf
0.59	Pine, Slash

Spec. Gravity:	Default Species:
0.36	Pine, Sugar
0.42	Yellow-Poplar
0.40	Redwood, Old-Growth
0.56	SYP (Southern Yellow Pine)
0.50	Custom Species

Hardwood.SPC

Spec. Gravity:	Hardwood Species:
0.41	Alder, Red
0.49	Ash, Black
0.58	Ash, Blue
0.56	Ash, Green
0.55	Ash, Oregon
0.55	Ash, Red
0.60	Ash, White
0.39	Aspen, Bigtooth
0.38	Aspen, Quaking
0.37	Basswood, American
0.64	Beech, American
0.55	Birch, Paper
0.65	Birch, Sweet
0.53	Birch, White
0.62	Birch, Yellow
0.38	Butternut
0.50	Cherry, Black
0.43	Chestnut, American
0.34	Cottonwood, Balsam Poplar
0.35	Cottonwood, Black
0.40	Cottonwood, Eastern
0.72	Dogwood, Flowering

Spec. Gravity:	Hardwood Species:
-----------------------	--------------------------

0.50	Elm, American
0.63	Elm, Rock
0.53	Elm, Slippery
0.53	Hackberry
0.66	Hickory (Pecan), Bitternut
0.60	Hickory (Pecan), Nutmeg
0.66	Hickory, Pecan
0.62	Hickory (Pecan), Water
0.72	Hickory (True), Mockernut
0.75	Hickory (True), Pignut
0.72	Hickory (True), Shagbark
0.69	Hickory (True), Shellbark
0.55	Holly, American
0.70	Hophornbeam, Eastern
0.55	Laurel, California
0.69	Locust, Black
0.64	Madrone, Pacific
0.50	Magnolia, Southern
0.48	Maple, Bigleaf
0.57	Maple, Black
0.60	Maple, Hard
0.54	Maple, Red
0.47	Maple, Silver
0.51	Maple, Soft
0.63	Maple, Sugar
0.61	Oak (Red), Black
0.53	Oak, California Black
0.68	Oak (Red), Cherrybark
0.63	Oak (Red), Laurel
0.63	Oak (Red), Northern Red
0.63	Oak (Red), Pin
0.67	Oak (Red), Scarlet
0.59	Oak (Red), Southern Red
0.63	Oak (Red), Water
0.69	Oak (Red), Willow
0.64	Oak (White), Bur
0.66	Oak (White), Chestnut
0.63	Oak (White), Overcup
0.67	Oak (White), Post

Spec. Gravity: Hardwood Species:

0.67	Oak (White), Swamp Chestnut
0.72	Oak (White), Swamp White
0.68	Oak, White
0.71	Persimmon, Common
0.46	Sassafras
0.52	Sweetgum
0.49	Sycamore, American
0.64	Tanoak
0.50	Tupelo, Black
0.50	Tupelo, Water
0.55	Walnut, Black
0.39	Willow, Black
0.42	Yellow-Poplar

Softwood Species

Spec. Gravity:	Softwood Species:
0.46	Baldcypress
0.44	Cedar, Alaska
0.32	Cedar, Atlantic White
0.47	Cedar, Eastern Red Cedar
0.37	Cedar, Incense
0.31	Cedar, Northern White
0.43	Cedar, Port Orford
0.32	Cedar, Western Red Cedar
0.44	Cedar, Yellow
0.48	Douglas Fir
0.35	Fir, Balsam
0.38	Fir, California Red
0.37	Fir, Grand
0.39	Fir, Noble
0.43	Fir, Pacific Silver
0.32	Fir, Subalpine
0.39	Fir, White
0.40	Hemlock, Eastern
0.45	Hemlock, Mountain
0.45	Hemlock, Western
0.52	Larch, Western

Spec. Gravity: Softwood Species:

0.35	Pine, Eastern White
0.43	Pine, Jack
0.51	Pine, Loblolly
0.41	Pine, Lodgepole
0.59	Pine, Longleaf
0.52	Pine, Pitch
0.56	Pine, Pond
0.40	Pine, Ponderosa
0.46	Pine, Red
0.48	Pine, Sand
0.51	Pine, Shortleaf
0.59	Pine, Slash
0.44	Pine, Spruce
0.36	Pine, Sugar
0.48	Pine, Virginia
0.35	Pine, Western White
0.40	Redwood, Old-Growth
0.35	Redwood, Young-Growth
0.42	Spruce, Black
0.35	Spruce, Engelmann
0.40	Spruce, Red
0.40	Spruce, Sitka
0.36	Spruce, White
0.56	SYP (Southern Yellow Pine)
0.53	Tamarack

Imported Species

Spec. Gravity:	Imported Species:
0.65	Afrormosia
0.57	Andiroba
0.51	Avodire
0.45	Banak (Virola spp.)

Spec. Gravity:	Imported Species:
0.70	Benge (Guibourtia arnoldiana)
0.42	Cativo
0.72	Degame
0.55	Determa
0.40	Hura
0.57	Iroko
0.75	Jarrah
0.38	Jelutong
0.70	Kapur
0.76	Keruing (Dipterocarpus spp.)
0.40	Limba
0.44	Mahogany, African
0.47	Mahogany, True
0.63	Manni
0.67	Merbau
0.54	Mersawa
0.32	Obeche
0.35	Okoume
0.68	Opepe
0.49	Parana Pine
0.66	Peroba de campos
0.71	Peroba rosa
0.42	Primavera
0.71	Purpleheart
0.45	Radiata Pine
0.56	Ramin
0.55	Roble (Tabebuia spp., Robble group)
0.84	Rosewood, Brazilian (Dalbergia nigra)
0.79	Rosewood, Indian
0.60	Sapele
0.44	Spanish Cedar
0.57	Teak

APPENDIX B

GLOSSARY

Communications Port – Serial computer port used to interface with the meter.

Data Set – Files that have been uploaded from the hand-meter that contain data. Data set files reside in the folder “Stat-Pak\Data”.

Export – Saves data from Stat-Pak to a file.

Group Report – A report generated from a set of readings from the hand-meter shown with a bar graph.

Import – Retrieves data from a file to Stat-Pak.

Measurement Data – Data recorded in the hand-meter.

Meter Number – A number stored in the hand-meter to identify it from other meters.

Readings Report – A report generated from a set of readings from the hand-meter shown with individual readings in numeric form.

Species – The type of wood, i.e. Douglas Fir.

Species Data – Specific Gravity settings that the hand-meter uses to compensate for the type of wood.

Summary Report – A bar graph report generated from multiple groups of group data.

Tool Bar – A bar located at the top of the Stat-Pak window that allows for user functions.



Wagner Meters

326 Pine Grove Road
Rogue River, OR 97537
Phone: (541) 582-0541
Fax: (541) 582-4138

L622 STAT-PAK FOR WINDOWS SOFTWARE UPGRADE PROCEDURE

You will need to perform the following procedure to upgrade your existing software (*if an earlier version of Stat-Pak for Windows is already installed on your system*):

Note: Uninstalling Stat-Pak removes all database files. Make sure to backup current information with the following procedure.

Backing up your data:

1. To back up current board data, right click on the Data folder, select Export -> Selected Data to Backup File. Save the file somewhere easy to find later. Be sure not to save the file in the folder where the current application is located, as it may be deleted when uninstalling the old software version!

2. To backup summary reports, right click on Summary Reports folder, select Export -> Selected Data to Backup File. Save the file somewhere easy to find later.

3. To backup your custom species list, open the Species folder and right click on the Custom folder, select Export -> Selected Data to Backup File. Save the file somewhere easy to find later. Close Wagner Stat-Pak.

Updating Stat-Pak:

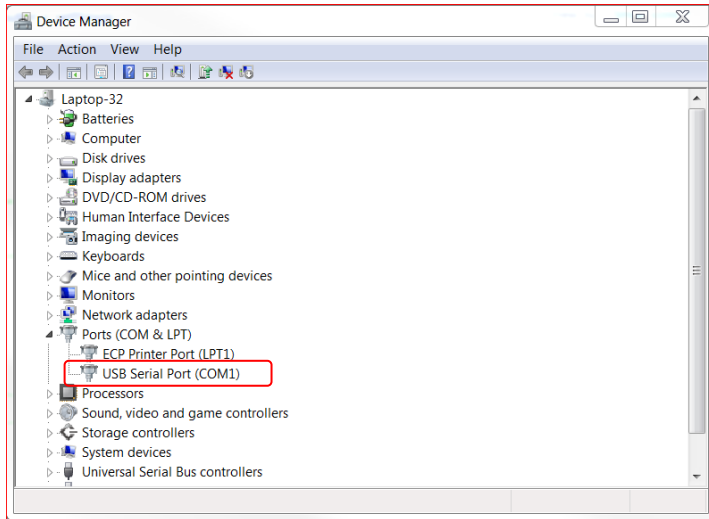
1. Go to Start menu -> Settings -> Control Panel -> Add/Remove Programs. Select Stat-Pak out of the list and click remove.
2. Now re-install Stat-Pak from your new CD.

Bringing your data back into Stat-Pak:

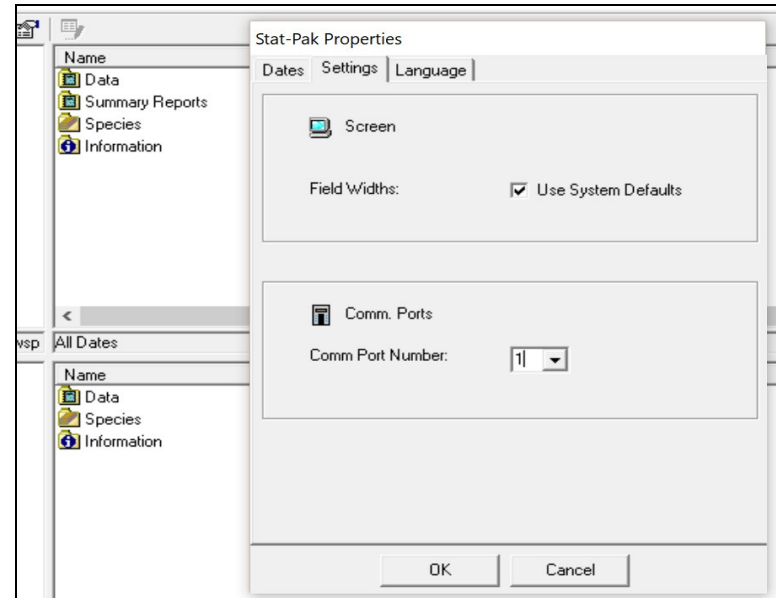
1. In Stat-Pak, click on file -> Import -> Data. Find and open the file you saved earlier.
 2. Click on file -> Import -> Summaries. Find and open the file you saved earlier.
 3. Click on file -> Import -> Species. Find and open the file you saved earlier.
- Plug one end of the USB cable into the COMM port of the L622.
 - Plug the other end of the USB cable into a PC Comm

Port. This Port # must match the Port # in the Stat-Pak Software.

- The PC should recognize the cable and you can see which Port it is in by going to Device Manager on the PC and view the *Ports (Com & LPT)* see below. The USB Serial Port connected, in this case, is COM1.



- Go to FILE-PROPERTIES-Settings Tab and verify Comm Port Number matches the Comm Port you are connected to, see below.



- Turn meter ON first, then Open Stat-Pak.

APPENDIX C

TROUBLESHOOTING GUIDE

When installing Stat-Pak for the first time, Run as Administrator, new versions of Windows has more security.

Have you installed a different version of Stat-Pak before uninstalling what was currently on the PC? Installing Stat-Pak without uninstalling/deleting the previous version can cause corruptions (Pg. 30). Go to File-Open and there should be an L6XX.wsp file to open. If that is not there, you will need to uninstall Stat-Pak and reinstall. This file is mentioned on Pg. 10.

Also, the meter has to be turned ON and connected to the PC before Stat-Pak is opened.

If your meter looks like corrupt data in the display, you may have tried to load too many species into the meter from Stat-Pak. Only 32 locations are available for different species or products you have created in Stat-

Pak or from one of the other Species folders; Hardwood, Import, etc. You will have to delete some species in the Stat-Pak Moisture Meter panel before loading new ones from the Stat-Pak panel. See Pg. 13.

You may be familiar with these steps, but we are covering the most common problems we help with. Also, the L612 and L622 meters work with the older versions of Stat-Pak as well as the newest version. The reports will show either "L612" or "L622" on them, no difference with the latest versions of Stat-Pak.

Best Regards,
Technical Service Dept.
Wagner Meters
1-800-634-9961